

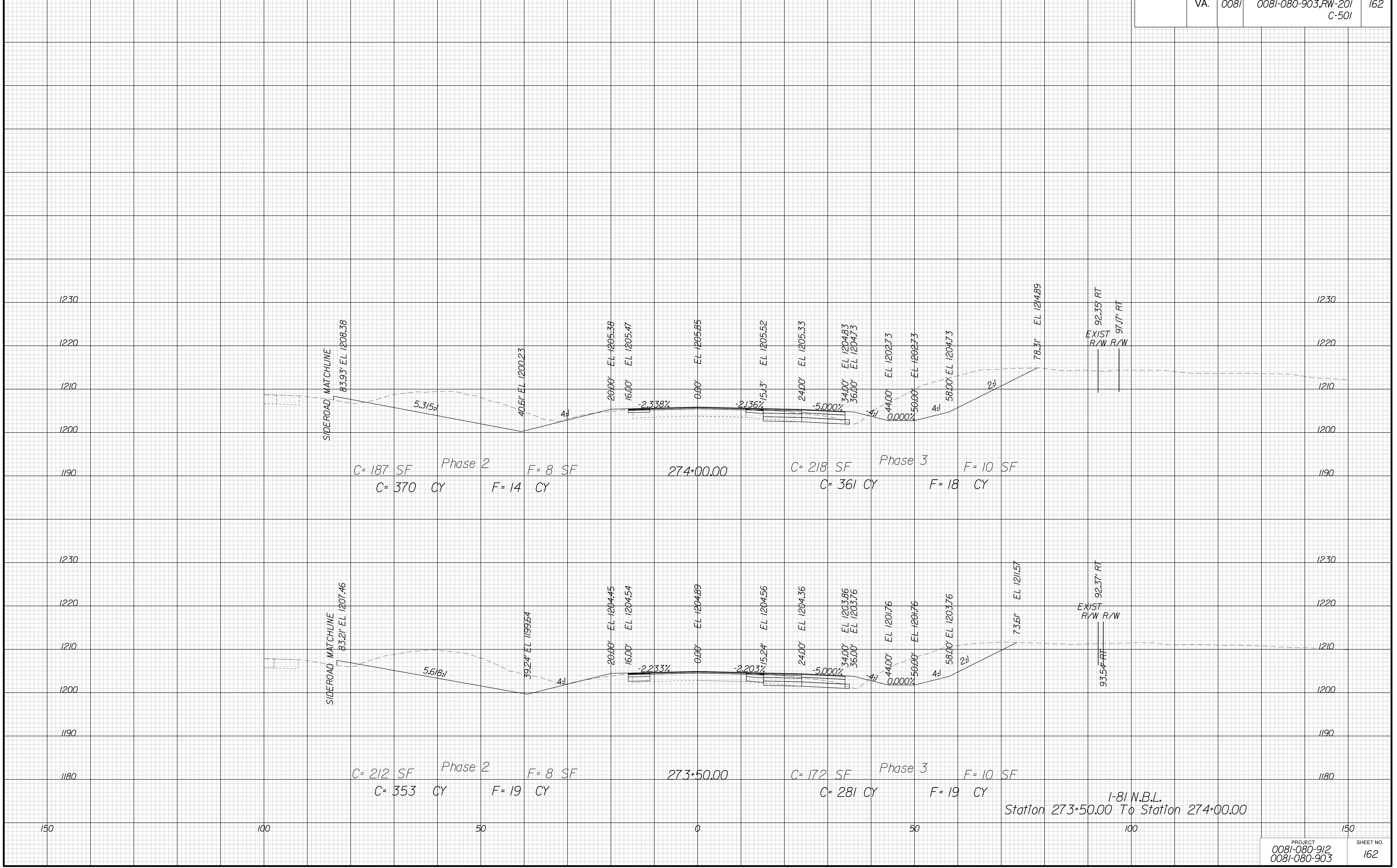
PROJECT MANAGER Kelly, Dunn, P.E., L.S., (540) 387-5374, Salem District  
SURVEYED BY, DATE Anderson & Associates, 12/21/16  
DESIGN BY Jason Henry, P.E. (804) 786-5975, (C.D.)  
SUBSURFACE UTILITY BY, DATE Miss. Utility, 12/21/16

# CROSS SECTIONS

SCALE 1 IN. = 10 FT

DESIGN FEATURES RELATING TO CONSTRUCTION OR TO REGULATION AND CONTROL OF TRAFFIC MAY BE SUBJECT TO CHANGE AS DEEMED NECESSARY BY THE DEPARTMENT

REVISED	STATE	ROUTE	STATE	PROJECT	SHEET NO.
	VA.	0081		0081-080-912, C-501 0081-080-903, RW-201 C-501	162



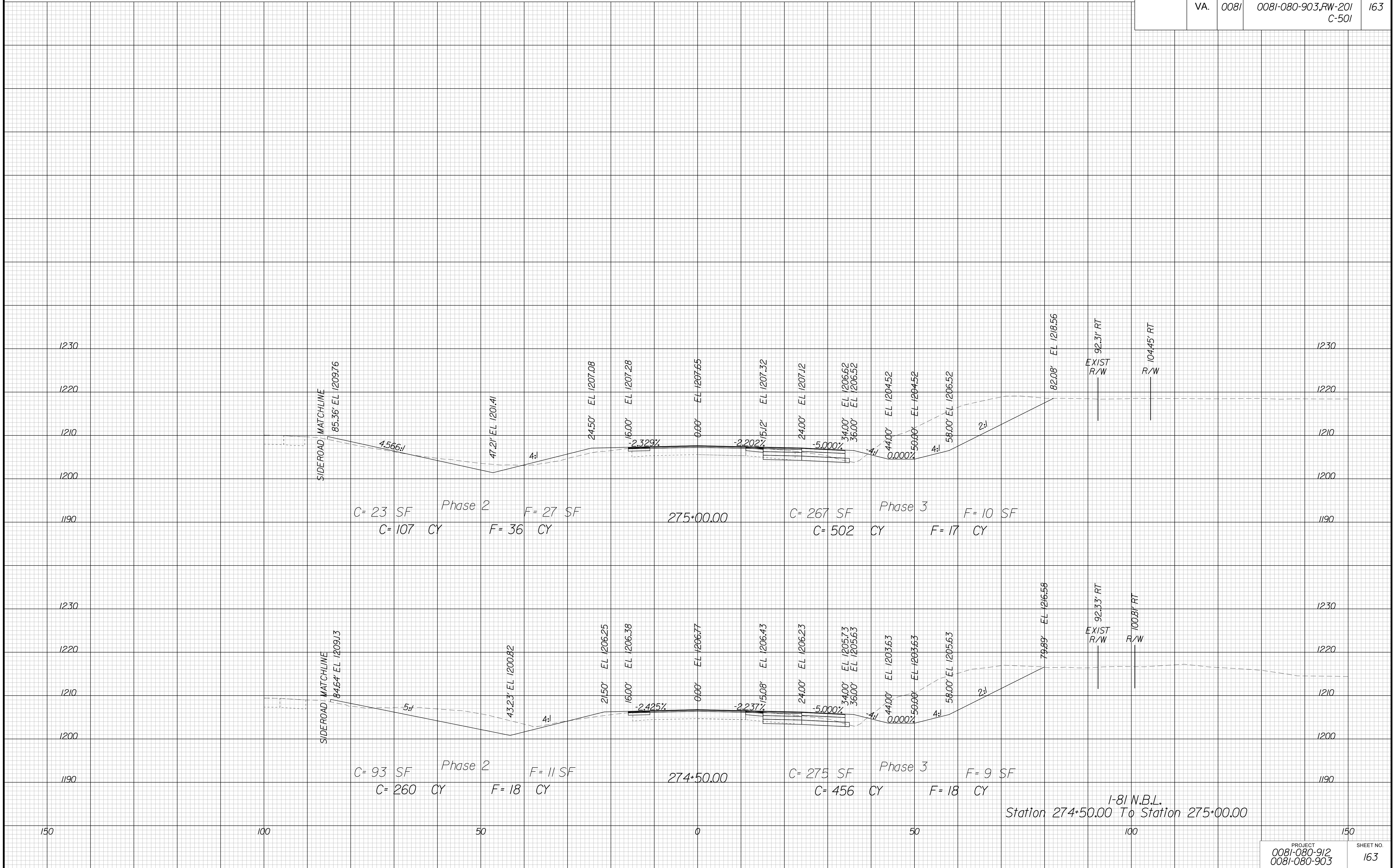
PROJECT MANAGER Kelly, Dunn, P.E., L.S., (540) 387-5374, Salem District  
SURVEYED BY, DATE Anderson & Associates, 12/21/16  
DESIGN BY Jason Henry, P.E. (804) 786-5975, (C.D.)  
SUBSURFACE UTILITY BY, DATE Miss. Utility, 12/21/16

# CROSS SECTIONS

SCALE 1 IN. = 10 FT

DESIGN FEATURES RELATING TO CONSTRUCTION OR TO REGULATION AND CONTROL OF TRAFFIC MAY BE SUBJECT TO CHANGE AS DEEMED NECESSARY BY THE DEPARTMENT

REVISED	STATE	ROUTE	STATE	PROJECT	SHEET NO.
	VA.	0081		0081-080-912, C-501 0081-080-903, RW-201 C-501	163



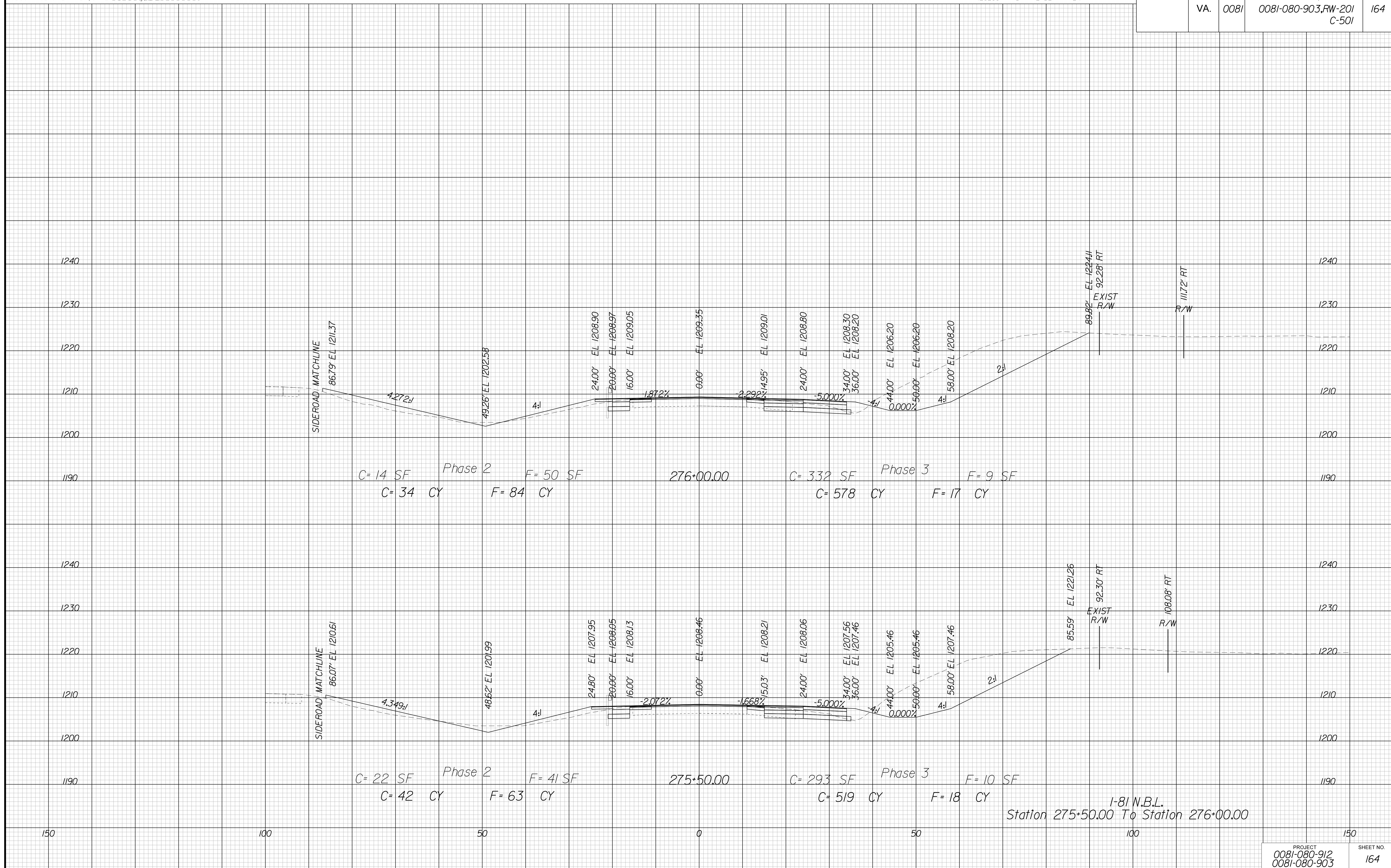
PROJECT MANAGER Kelly, Dunn, P.E., L.S., (540) 387-5374, Salem District  
SURVEYED BY, DATE Anderson & Associates, 12/21/16  
DESIGN BY Jason Henry, P.E. (804) 786-5975, (C.D.)  
SUBSURFACE UTILITY BY, DATE Miss. Utility, 12/21/16

# CROSS SECTIONS

SCALE 1 IN. = 10 FT

DESIGN FEATURES RELATING TO CONSTRUCTION OR TO REGULATION AND CONTROL OF TRAFFIC MAY BE SUBJECT TO CHANGE AS DEEMED NECESSARY BY THE DEPARTMENT

REVISED	STATE	ROUTE	STATE PROJECT	SHEET NO.
	VA.	0081	0081-080-912, C-501 0081-080-903, RW-201 C-501	164



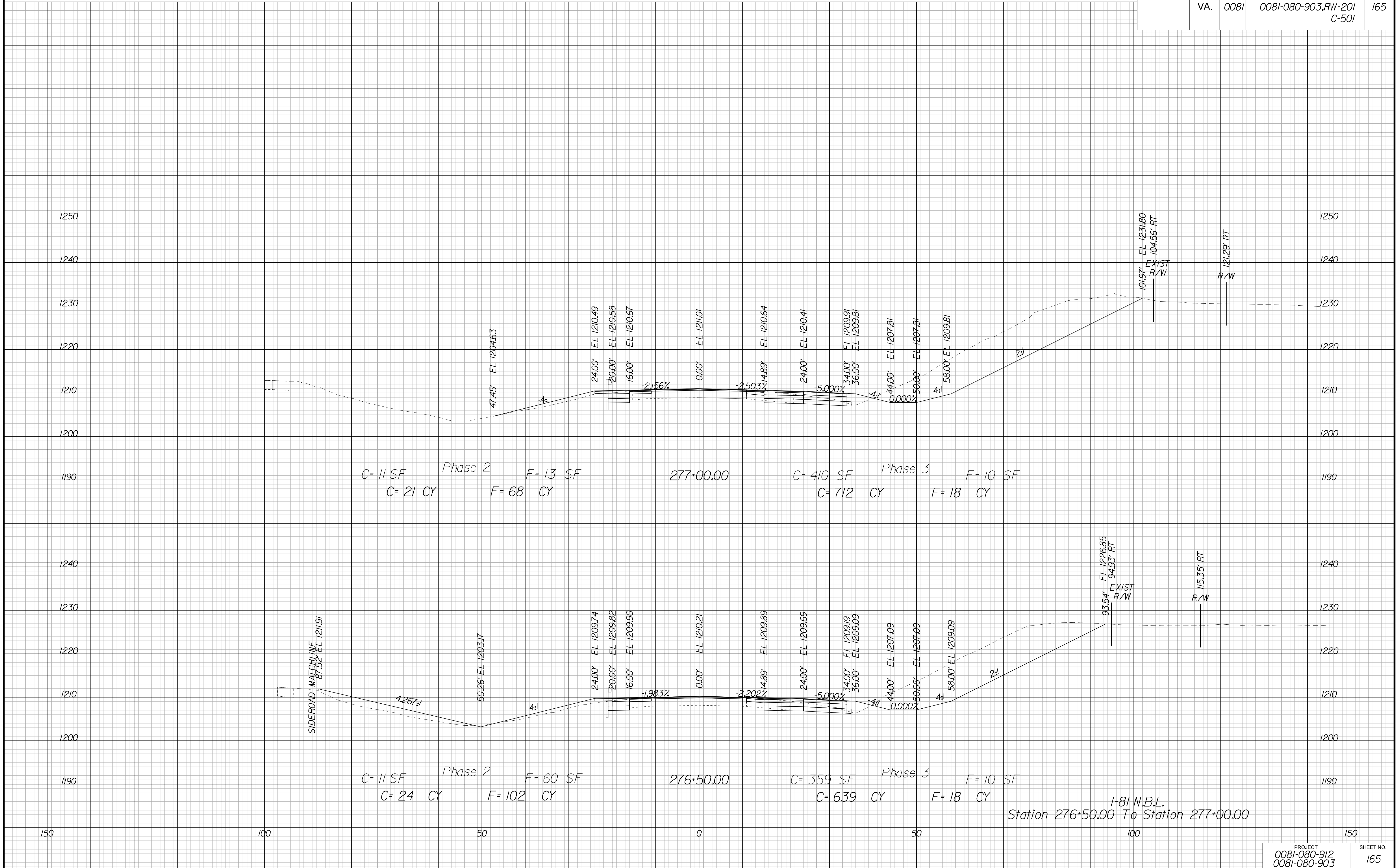
PROJECT MANAGER Kelly, Dunn, P.E., L.S., (540) 387-5374, Salem District  
SURVEYED BY, DATE Anderson & Associates, 12/21/16  
DESIGN BY Jason Henry, P.E. (804) 786-5975, (C.D.)  
SUBSURFACE UTILITY BY, DATE Miss. Utility, 12/21/16

# CROSS SECTIONS

SCALE 1 IN. = 10 FT

DESIGN FEATURES RELATING TO CONSTRUCTION OR TO REGULATION AND CONTROL OF TRAFFIC MAY BE SUBJECT TO CHANGE AS DEEMED NECESSARY BY THE DEPARTMENT

REVISION	STATE	ROUTE	STATE	PROJECT	SHEET NO.
	VA.	0081		0081-080-912, C-501 0081-080-903, RW-201 C-501	



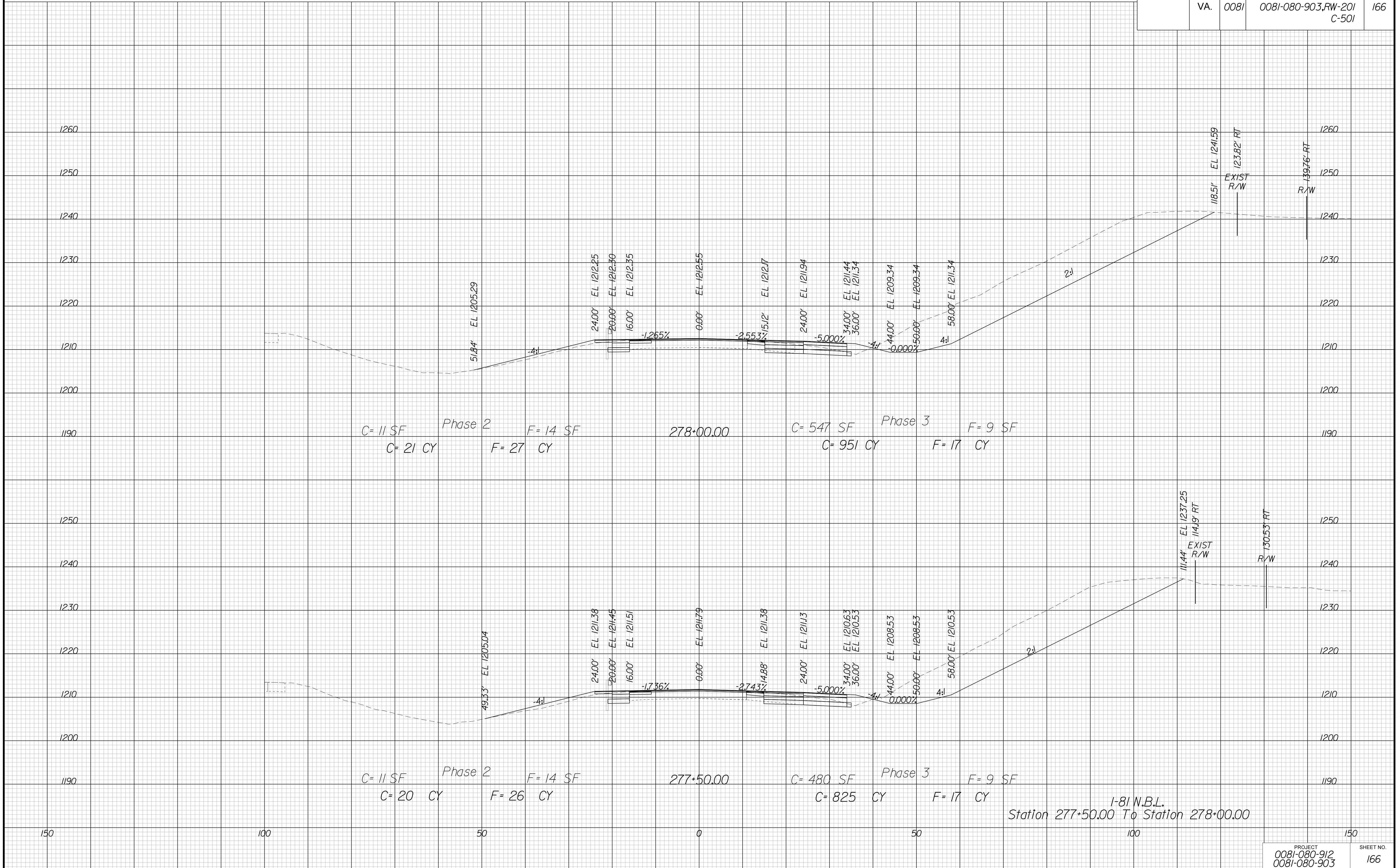
PROJECT MANAGER Kelly, Dunn, P.E., L.S., (540) 387-5374, Salem District  
SURVEYED BY, DATE Anderson & Associates, 12/21/16  
DESIGN BY Jason Henry, P.E. (804) 786-5975, (C.D.)  
SUBSURFACE UTILITY BY, DATE Miss. Utility, 12/21/16

# CROSS SECTIONS

SCALE 1 IN. = 10 FT

DESIGN FEATURES RELATING TO CONSTRUCTION OR TO REGULATION AND CONTROL OF TRAFFIC MAY BE SUBJECT TO CHANGE AS DEEMED NECESSARY BY THE DEPARTMENT

REVISION	STATE	ROUTE	STATE	PROJECT	SHEET NO.
	VA.	0081		0081-080-912, C-501 0081-080-903, RW-201 C-501	166





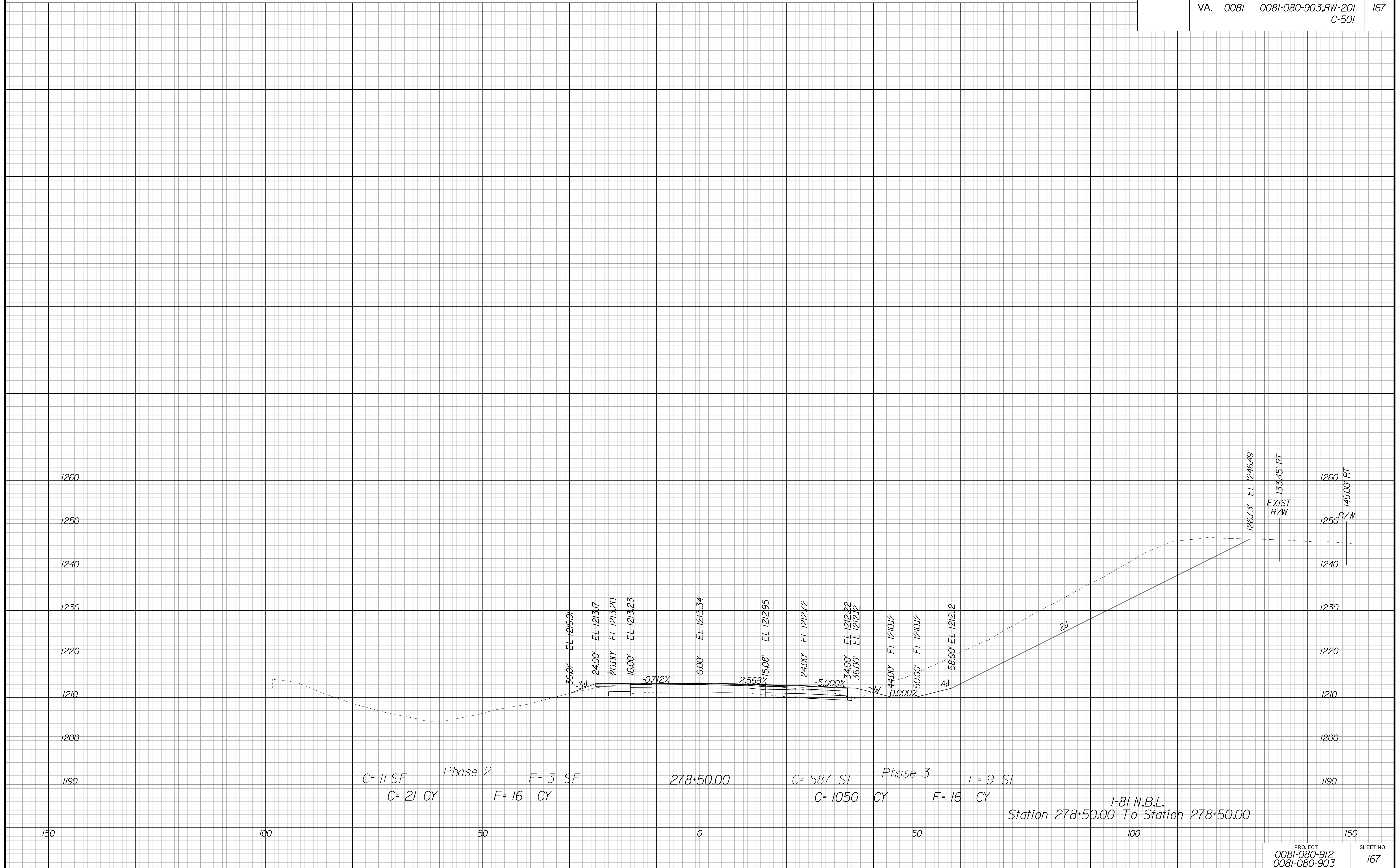
PROJECT MANAGER Kelly, Dunn, P.E., L.S., (540) 387-5374, Salem District  
 SURVEYED BY, DATE Anderson & Associates, 12/21/16  
 DESIGN BY Jason Henry, P.E. (804) 786-5975, (C.D.)  
 SUBSURFACE UTILITY BY, DATE Miss. Utility, 12/21/16

# CROSS SECTIONS

SCALE 1 IN. = 10 FT

DESIGN FEATURES RELATING TO CONSTRUCTION  
 OR TO REGULATION AND CONTROL OF TRAFFIC  
 MAY BE SUBJECT TO CHANGE AS DEEMED  
 NECESSARY BY THE DEPARTMENT

REVISED	STATE	ROUTE	STATE	PROJECT	SHEET NO.
	VA.	0081		0081-080-912, C-501 0081-080-903, RW-201 C-501	167



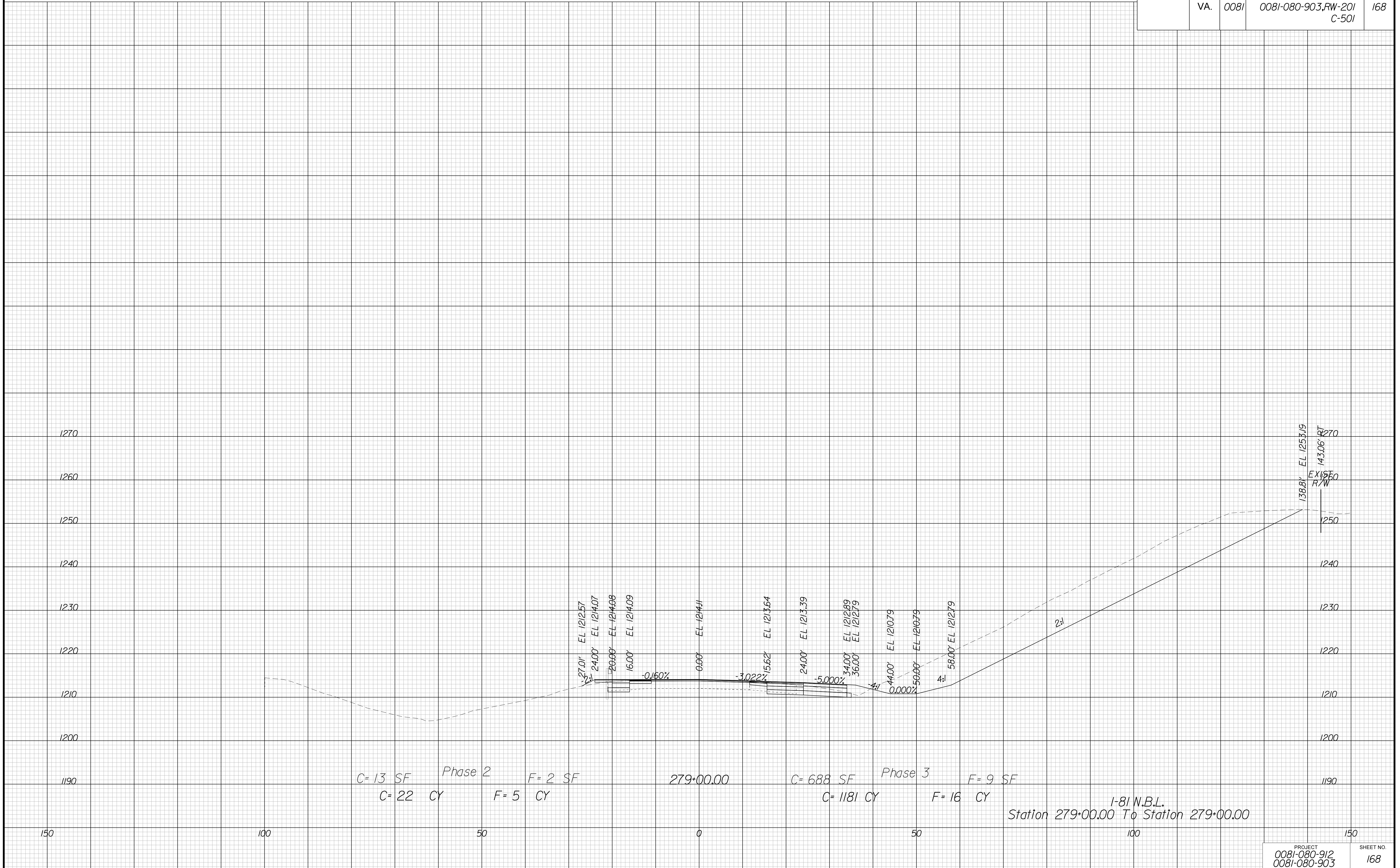
PROJECT MANAGER Kelly, Dunn, P.E., L.S., (540) 387-5374, Salem District  
SURVEYED BY, DATE Anderson & Associates, 12/21/16  
DESIGN BY Jason Henry, P.E. (804) 786-5975, (C.D.)  
SUBSURFACE UTILITY BY, DATE Miss. Utility, 12/21/16

# CROSS SECTIONS

SCALE 1 IN. = 10 FT

DESIGN FEATURES RELATING TO CONSTRUCTION OR TO REGULATION AND CONTROL OF TRAFFIC MAY BE SUBJECT TO CHANGE AS DEEMED NECESSARY BY THE DEPARTMENT

REVISED	STATE	ROUTE	STATE	PROJECT	SHEET NO.
	VA.	0081		0081-080-912, C-501 0081-080-903, RW-201 C-501	168



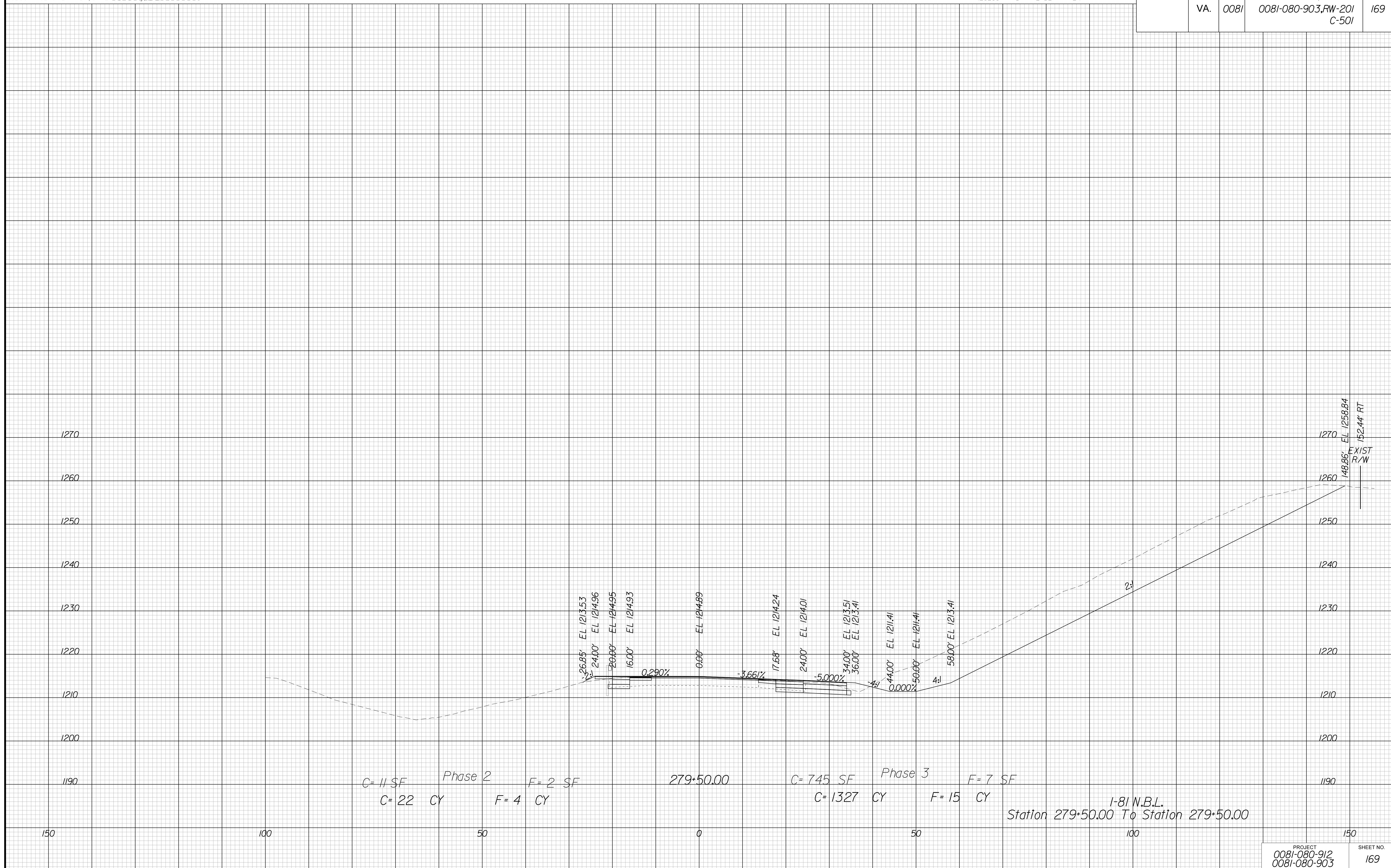
PROJECT MANAGER Kelly, Dunn, P.E., L.S., (540) 387-5374, Salem District  
 SURVEYED BY, DATE Anderson & Associates, 12/21/16  
 DESIGN BY Jason Henry, P.E. (804) 786-5975, (C.D.)  
 SUBSURFACE UTILITY BY, DATE Miss. Utility, 12/21/16

# CROSS SECTIONS

SCALE 1 IN. = 10 FT

DESIGN FEATURES RELATING TO CONSTRUCTION  
 OR TO REGULATION AND CONTROL OF TRAFFIC  
 MAY BE SUBJECT TO CHANGE AS DEEMED  
 NECESSARY BY THE DEPARTMENT

REVISED	STATE	ROUTE	STATE	PROJECT	SHEET NO.
	VA.	0081		0081-080-912, C-501 0081-080-903, RW-201 C-501	169



Phase 2  
 C= 11 SF F= 2 SF  
 C= 22 CY F= 4 CY

Phase 3  
 C= 745 SF F= 7 SF  
 C= 1327 CY F= 15 CY

1-81 N.B.L.  
 Station 279+50.00 To Station 279+50.00



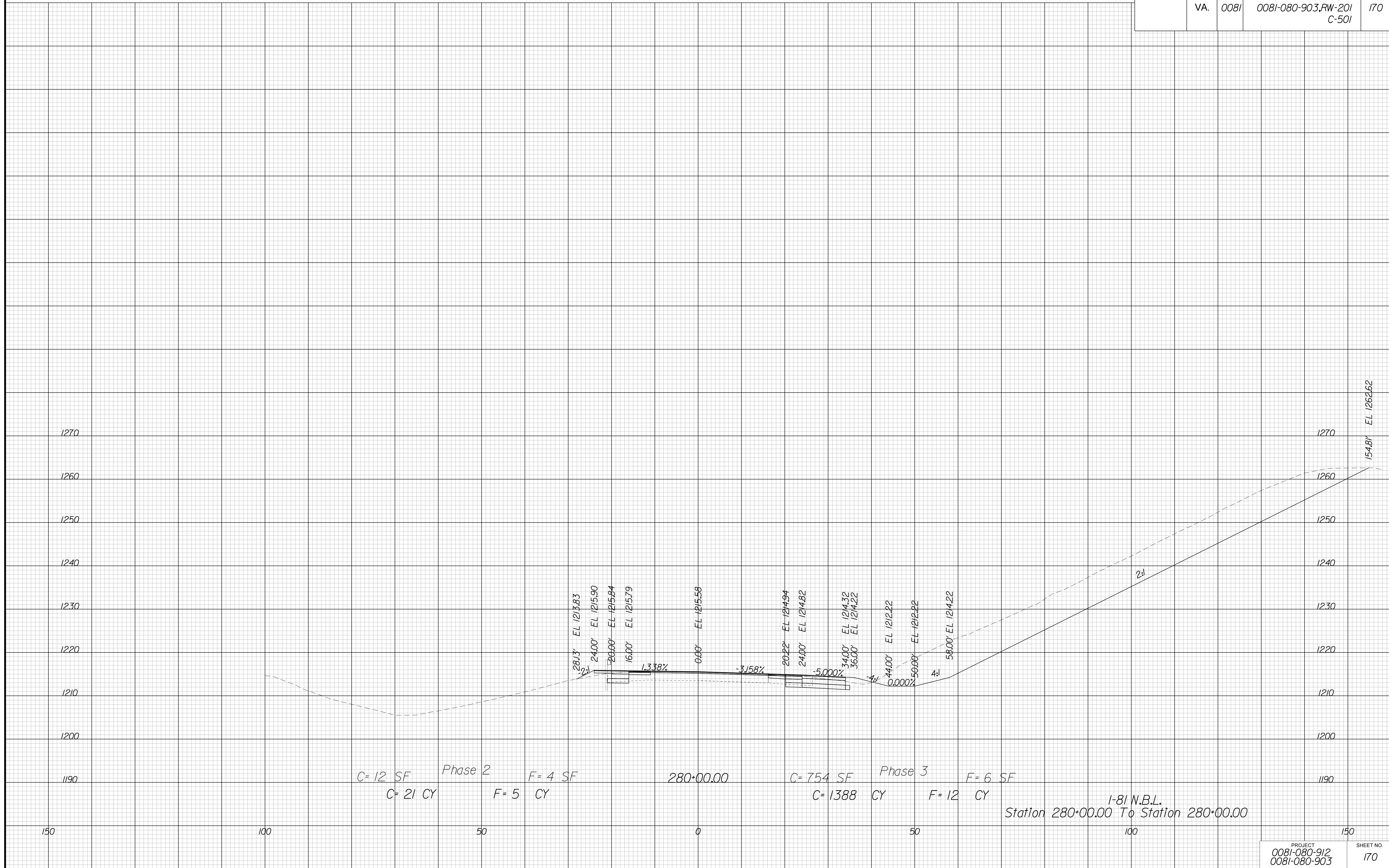
PROJECT MANAGER Kelly, Dunn, P.E., L.S., (540) 387-5374, Salem District  
SURVEYED BY, DATE Anderson & Associates, 12/21/16  
DESIGN BY Jason Henry, P.E. (804) 786-5975, (C.D.)  
SUBSURFACE UTILITY BY, DATE Miss. Utility, 12/21/16

# CROSS SECTIONS

SCALE 1 IN. = 10 FT

DESIGN FEATURES RELATING TO CONSTRUCTION  
OR TO REGULATION AND CONTROL OF TRAFFIC  
MAY BE SUBJECT TO CHANGE AS DEEMED  
NECESSARY BY THE DEPARTMENT

REVISED	STATE	ROUTE	STATE PROJECT	SHEET NO.
	VA.	0081	0081-080-912, C-501 0081-080-903, RW-201 C-501	170



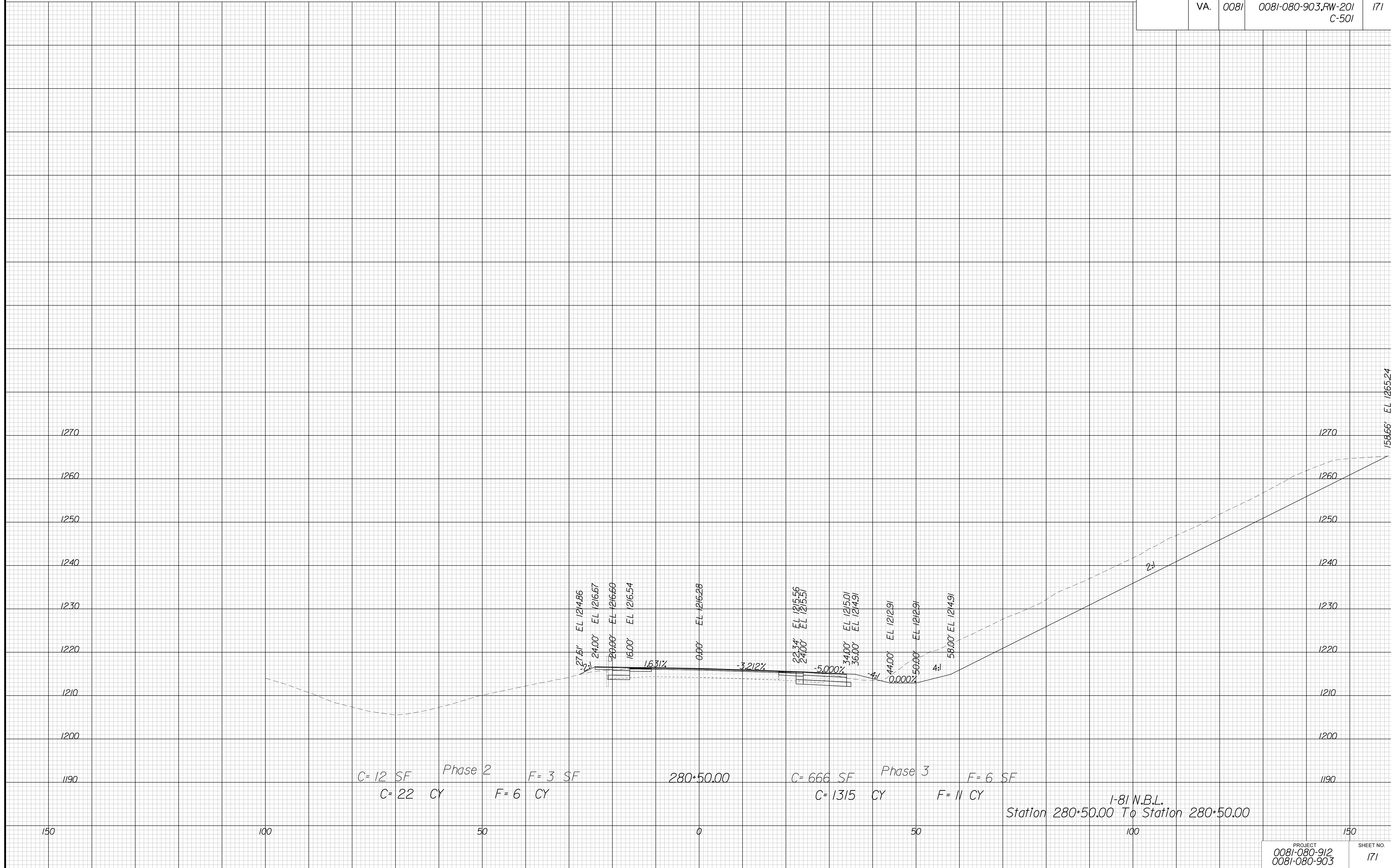
PROJECT MANAGER Kelly, Dunn, P.E., L.S., (540) 387-5374, Salem District  
SURVEYED BY, DATE Anderson & Associates, 12/21/16  
DESIGN BY Jason Henry, P.E. (804) 786-5975, (C.D.)  
SUBSURFACE UTILITY BY, DATE Miss. Utility, 12/21/16

# CROSS SECTIONS

SCALE 1 IN. = 10 FT

DESIGN FEATURES RELATING TO CONSTRUCTION OR TO REGULATION AND CONTROL OF TRAFFIC MAY BE SUBJECT TO CHANGE AS DEEMED NECESSARY BY THE DEPARTMENT

REVISION	STATE	ROUTE	PROJECT	SHEET NO.
	VA.	0081	0081-080-912, C-501 0081-080-903, RW-201 C-501	



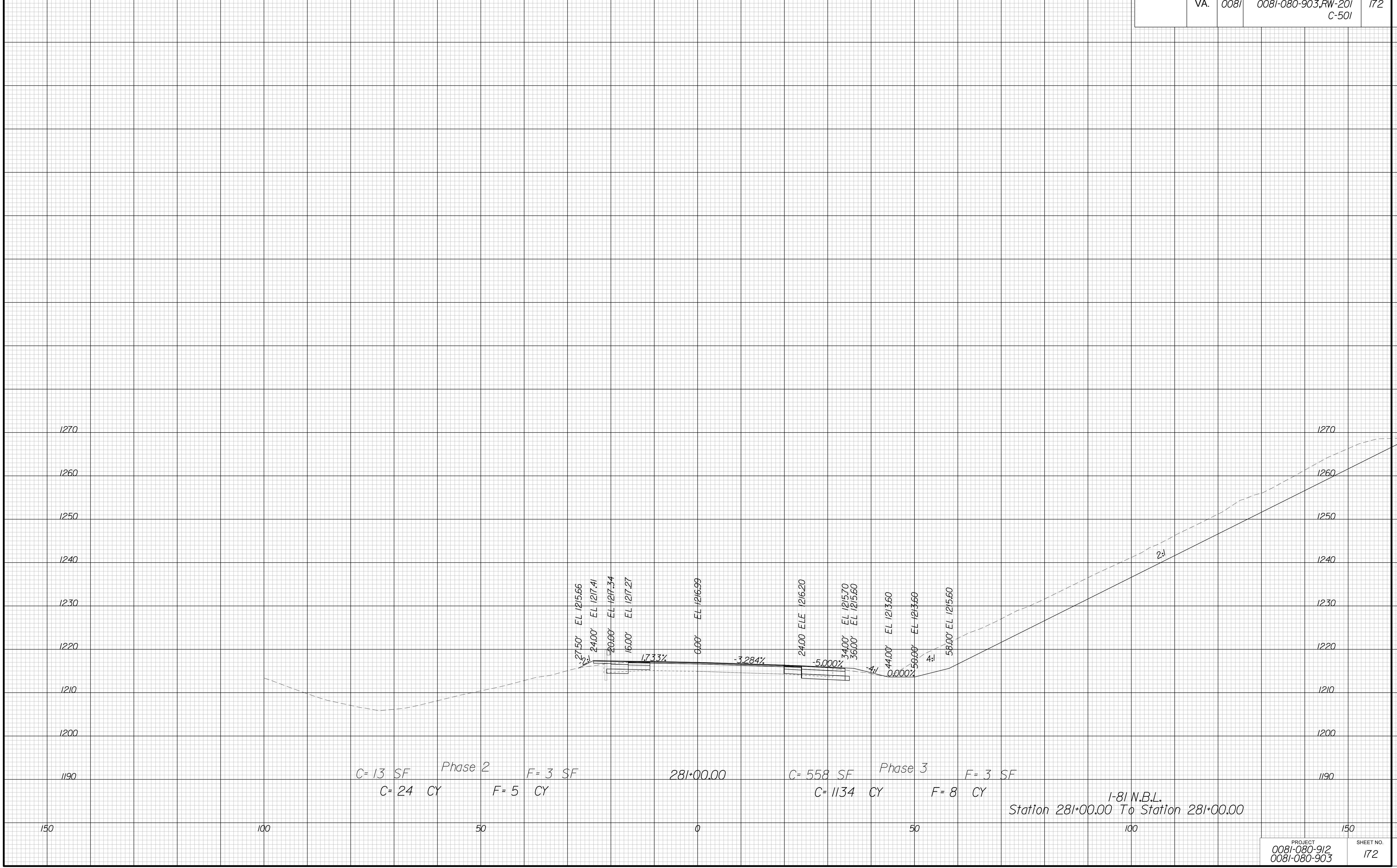
PROJECT MANAGER Kelly, Dunn, P.E., L.S., (540) 387-5374, Salem District  
SURVEYED BY, DATE Anderson & Associates, 12/21/16  
DESIGN BY Jason Henry, P.E. (804) 786-5975, (C.D.)  
SUBSURFACE UTILITY BY, DATE Miss. Utility, 12/21/16

# CROSS SECTIONS

SCALE 1 IN. = 10 FT

DESIGN FEATURES RELATING TO CONSTRUCTION OR TO REGULATION AND CONTROL OF TRAFFIC MAY BE SUBJECT TO CHANGE AS DEEMED NECESSARY BY THE DEPARTMENT

REVISED	STATE	ROUTE	STATE	PROJECT	SHEET NO.
	VA.	0081		0081-080-912, C-501 0081-080-903, RW-201 C-501	172



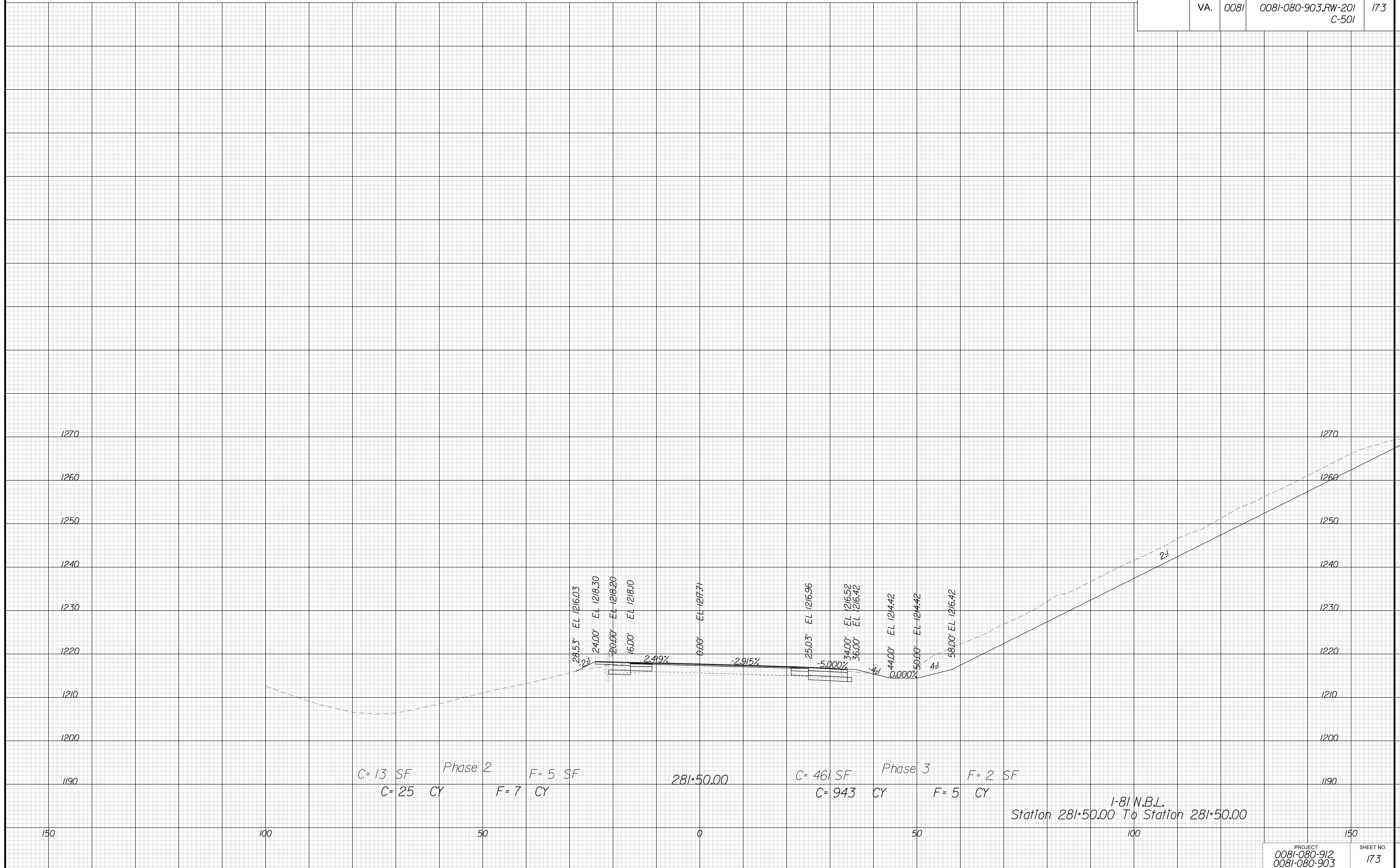
PROJECT MANAGER Kelly, Dunn, P.E., L.S., (540) 387-5374, Salem District  
 SURVEYED BY DATE Anderson & Associates, 12/21/16  
 DESIGN BY Jason Henry, P.E. (804) 786-5975, (C.D.)  
 SUBSURFACE UTILITY BY DATE Miss. Utility, 12/21/16

# CROSS SECTIONS

SCALE 1 IN. = 10 FT

DESIGN FEATURES RELATING TO CONSTRUCTION  
 OR TO REGULATION AND CONTROL OF TRAFFIC  
 MAY BE SUBJECT TO CHANGE AS DEEMED  
 NECESSARY BY THE DEPARTMENT

REVISED	STATE	ROUTE	STATE	PROJECT	SHEET NO.
	VA.	0081		0081-080-912, C-501 0081-080-903, RW-201 C-501	173



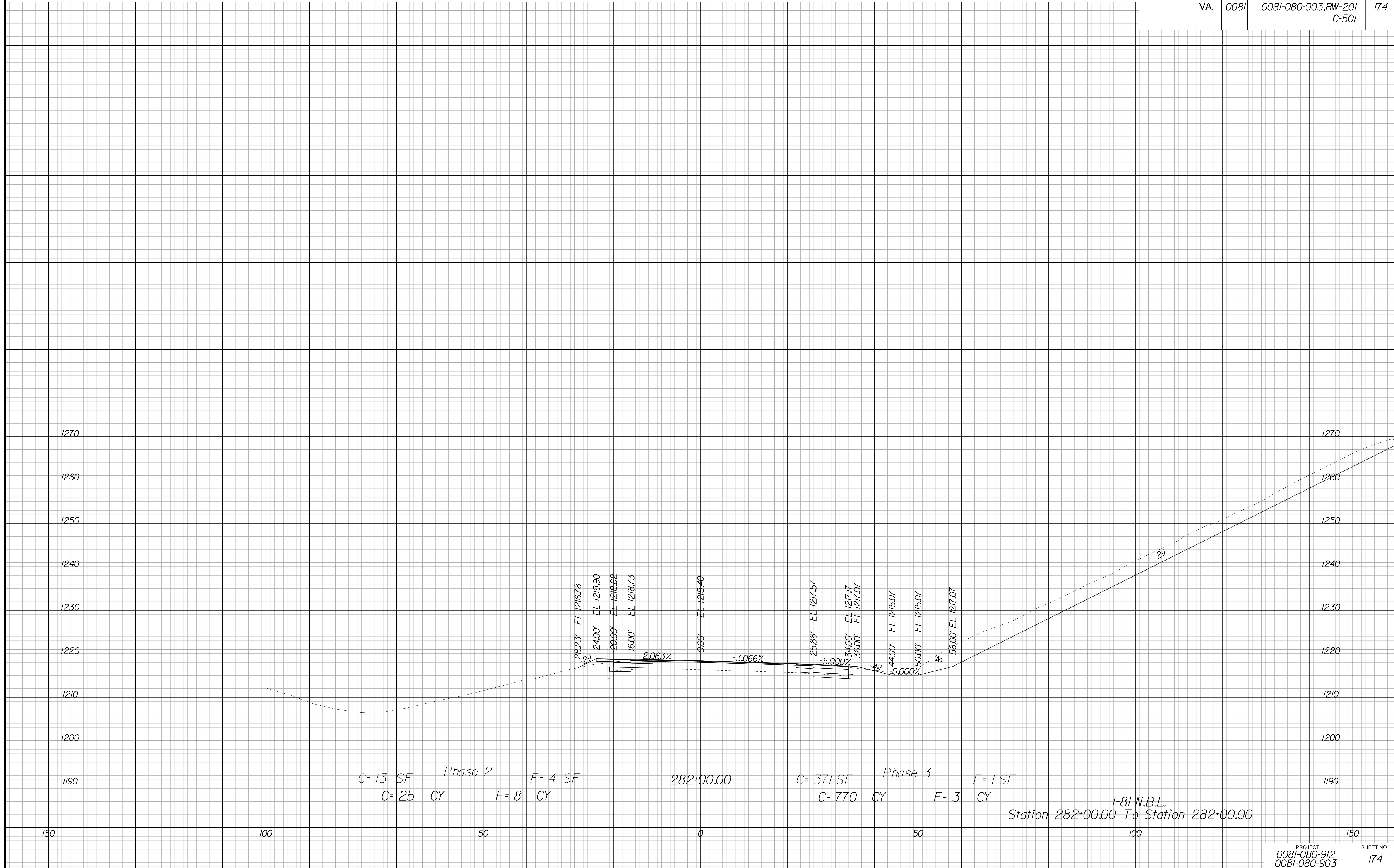
PROJECT MANAGER Kelly, Dunn, P.E., L.S., (540) 387-5374, Salem District  
 SURVEYED BY, DATE Anderson & Associates, 12/21/16  
 DESIGN BY Jason Henry, P.E. (804) 786-5975, (C.D.)  
 SUBSURFACE UTILITY BY, DATE Miss. Utility, 12/21/16

# CROSS SECTIONS

SCALE 1 IN. = 10 FT

DESIGN FEATURES RELATING TO CONSTRUCTION  
 OR TO REGULATION AND CONTROL OF TRAFFIC  
 MAY BE SUBJECT TO CHANGE AS DEEMED  
 NECESSARY BY THE DEPARTMENT

REVISED	STATE	ROUTE	STATE PROJECT	SHEET NO.
	VA.	0081	0081-080-912, C-501 0081-080-903, RW-201 C-501	174



C= 13 SF Phase 2 F= 4 SF  
 C= 25 CY F= 8 CY

C= 371 SF Phase 3 F= 1 SF  
 C= 770 CY F= 3 CY

1-81 N.B.L.  
 Station 282+00.00 To Station 282+00.00



PROJECT MANAGER Kelly, Dunn, P.E., L.S., (540) 387-5374, Salem District  
 SURVEYED BY, DATE Anderson & Associates, 12/21/16  
 DESIGN BY Jason Henry, P.E. (804) 786-5975, (C.D.)  
 SUBSURFACE UTILITY BY, DATE Miss. Utility, 12/21/16

# CROSS SECTIONS

SCALE 1 IN. = 10 FT

DESIGN FEATURES RELATING TO CONSTRUCTION  
 OR TO REGULATION AND CONTROL OF TRAFFIC  
 MAY BE SUBJECT TO CHANGE AS DEEMED  
 NECESSARY BY THE DEPARTMENT

REVISED	STATE	ROUTE	STATE	PROJECT	SHEET NO.
	VA.	0081	0081-080-912, C-501	0081-080-903, RW-201 C-501	

